

Working Instruction, Mechanical

EC400 and EC400g

CONTENTS

1	General	2
2	Tools and Equipment	2
3	Part Replacement	3
3.1	Top Label	3
3.2	Bottom Label	4
3.3	Antenna Connector Doors	6
3.4	Flip Antenna	7
4	Revision History	9



1 General

When handling this product, take care to keep all surfaces clean of dirt, dust, debris, and hand grease. Use appropriate ESD precautions when working on this product. The use of finger cots or gloves, an ESD mat, and an ESD wrist strap are required at minimum.

2 Tools and Equipment

The following tools and equipment should be available while performing the procedures.

- Style 2A Tweezers – Rounded Tip
- Nylon Pointer
- Lint free wipes
- Alcohol
- Hot air device
- Torque Drive
- T6 Bit



3 Part Replacement

3.1 Top Label

Removal

NOTE: HEATING UP THE OLD LABEL WITH A HOT AIR DEVICE MAY HELP REDUCE THE DIFFICULTY OF PEELING OFF THE LABEL.

NOTE: AVOID SCRATCHING THE PC CARD'S METAL CASE WITH THE TWEEZERS WHEN TRYING TO GET THE CORNER OF THE LABEL LIFTED.

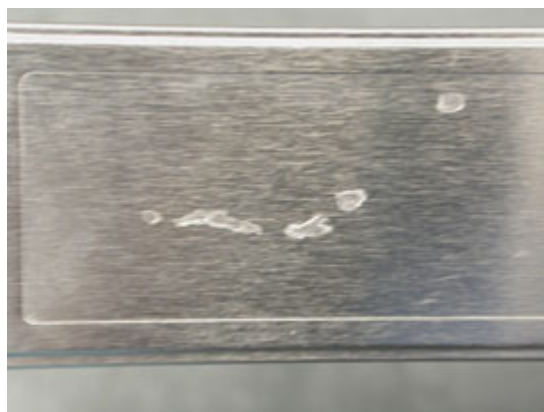
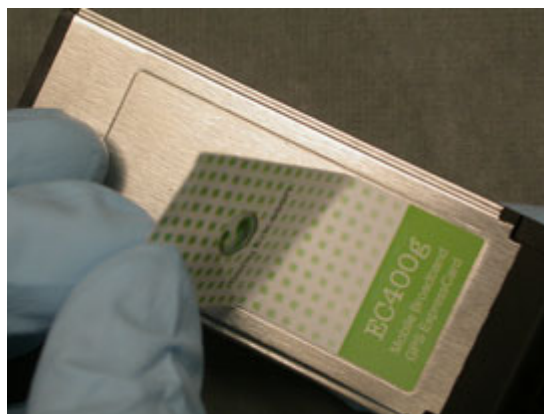
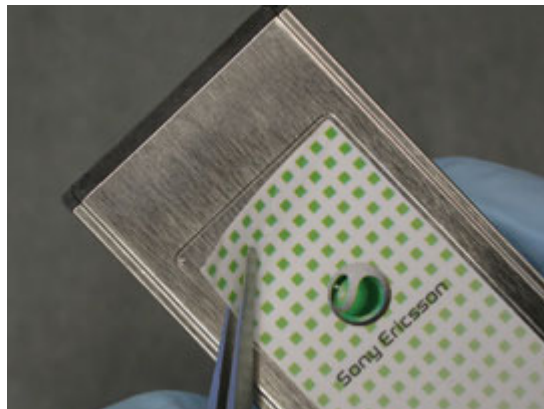
Use a pair of round tipped tweezers to lift one corner of the label enough so that the lifted corner can be gripped with your fingers.

Grip the lifted corner of the label with your fingers and peel the label off.

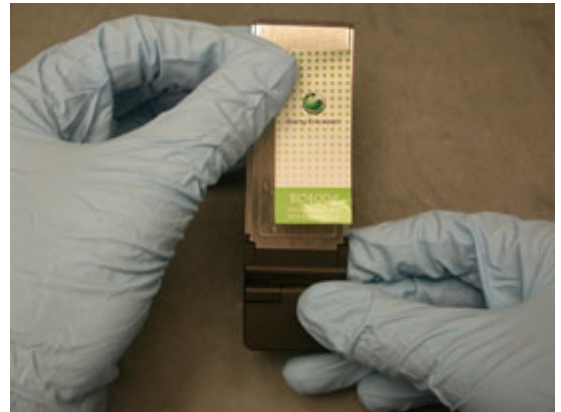
Clean off any adhesive residue left in the label area with alcohol and lint free wipes.

Installation

Obtain a new top label and remove the protective backing from it.



Orient the top label as shown.

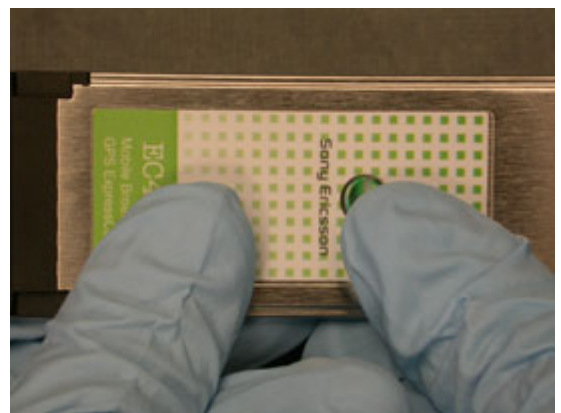


Place the new top label so it is within the recessed area in the metal case.

NOTE: THE LABEL MUST BE WITHIN THE RECESSED AREA. IT CANNOT OVERLAP THE SIDE WALLS OF THE RECESSED AREA.



Once the label is correctly positioned on the metal case, carefully smooth the label into place.

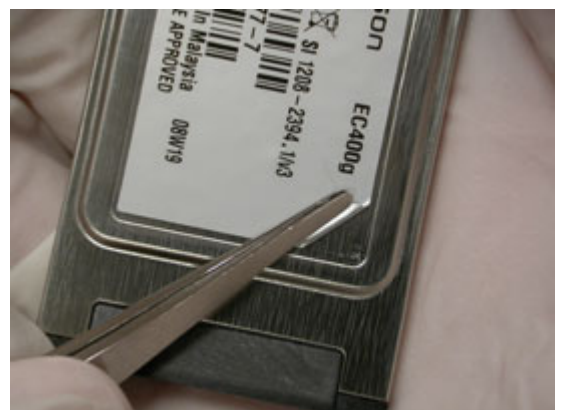


3.2 Bottom Label

Print a new bottom label before starting the removal procedure.

Removal

Use a pair of round tipped tweezers to lift one corner of the label enough so that the lifted corner can be gripped with your fingers.



Grip the lifted corner of the label with your fingers and peel the label off.



Clean off any adhesive residue left in the label area with alcohol and lint free wipes.



Installation

Obtain the new bottom label that has been printed.

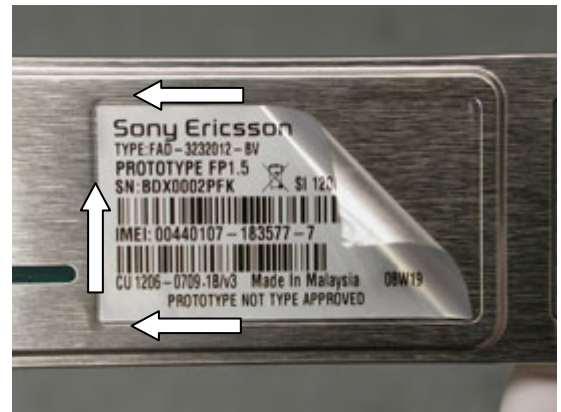
NOTE: THE TEXT MUST BE FULLY READABLE AND THE BARCODES MUST BE SCANNABLE.

Orient the bottom label as shown.



Place the new bottom label so that it is within the corresponding recessed area in the metal case.

NOTE: THE LABEL MUST BE WITHIN THE RECESSED AREA. IT CANNOT OVERLAP THE SIDE WALLS OF THE RECESSED AREA.



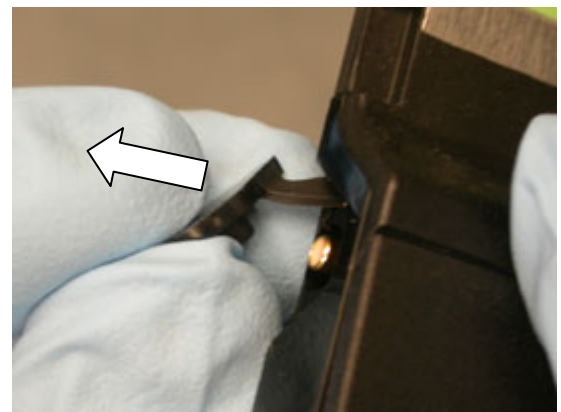
Once the label is correctly positioned on the metal case, carefully smooth the label into place.



3.3 Antenna Connector Doors

Removal

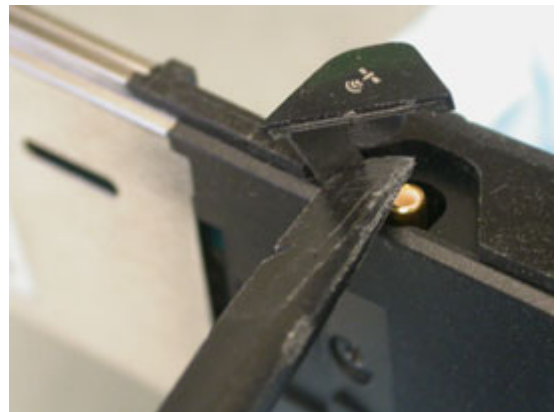
Remove the door by pulling it out of the card.



Installation

Obtain a new door of the correct type.

Using the flat end of a nylon pointer, press the tab portion of the door into the slot indicated in the bottom of the door cavity.



Once the tab portion of the door is inserted into its slot, mount the remainder of the door into its cavity.



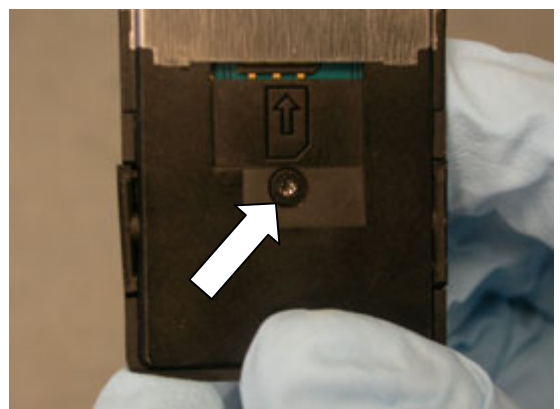
3.4 Flip Antenna

Open the antenna.

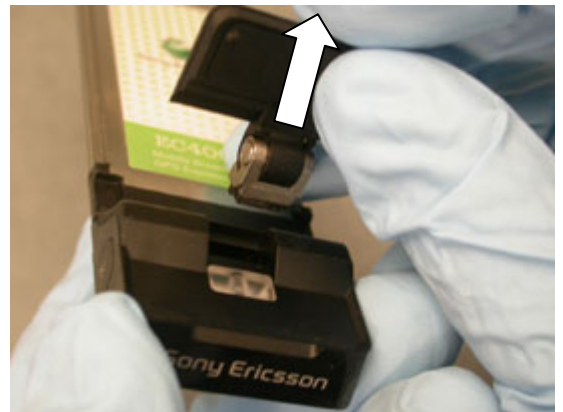


Removal

Remove the screw using a T6 bit.



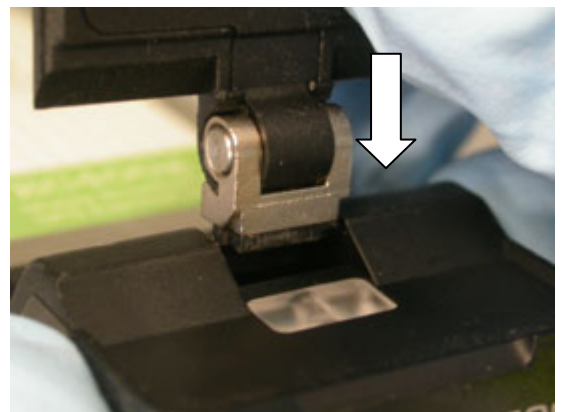
Remove the Antenna.



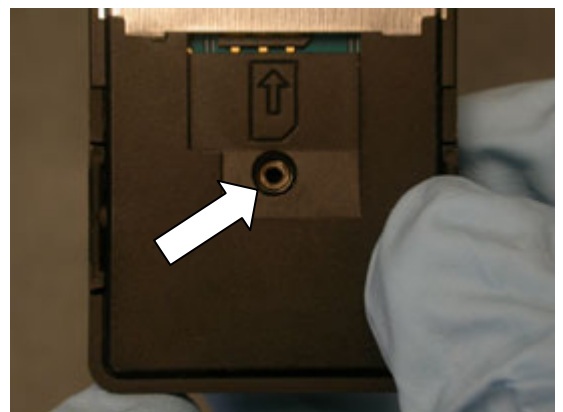
Installation

Obtain a new Flip Antenna.

Insert the antenna into the cavity with the orientation shown.



Insert the back screw. Tighten to 17 N*cm using a T6 bit.



Close the antenna.



4 Revision History

Rev.	Date	Changes / Comments
1	2008-July 8	Initial Release